

图 2 不同抽真空时间处理花粉的破损率
Fig. 2 Different vacuum time to treated the exploded pollen rate

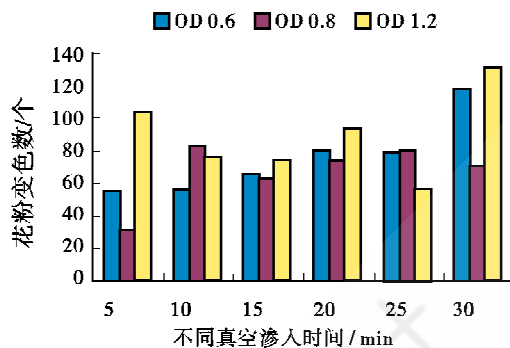


图 4 不同菌浓度及真空渗入时间对花粉瞬间转化的影响
Fig. 4 Effected different agrobacterium concentration and the vacuum infiltration time on transient transformed rate

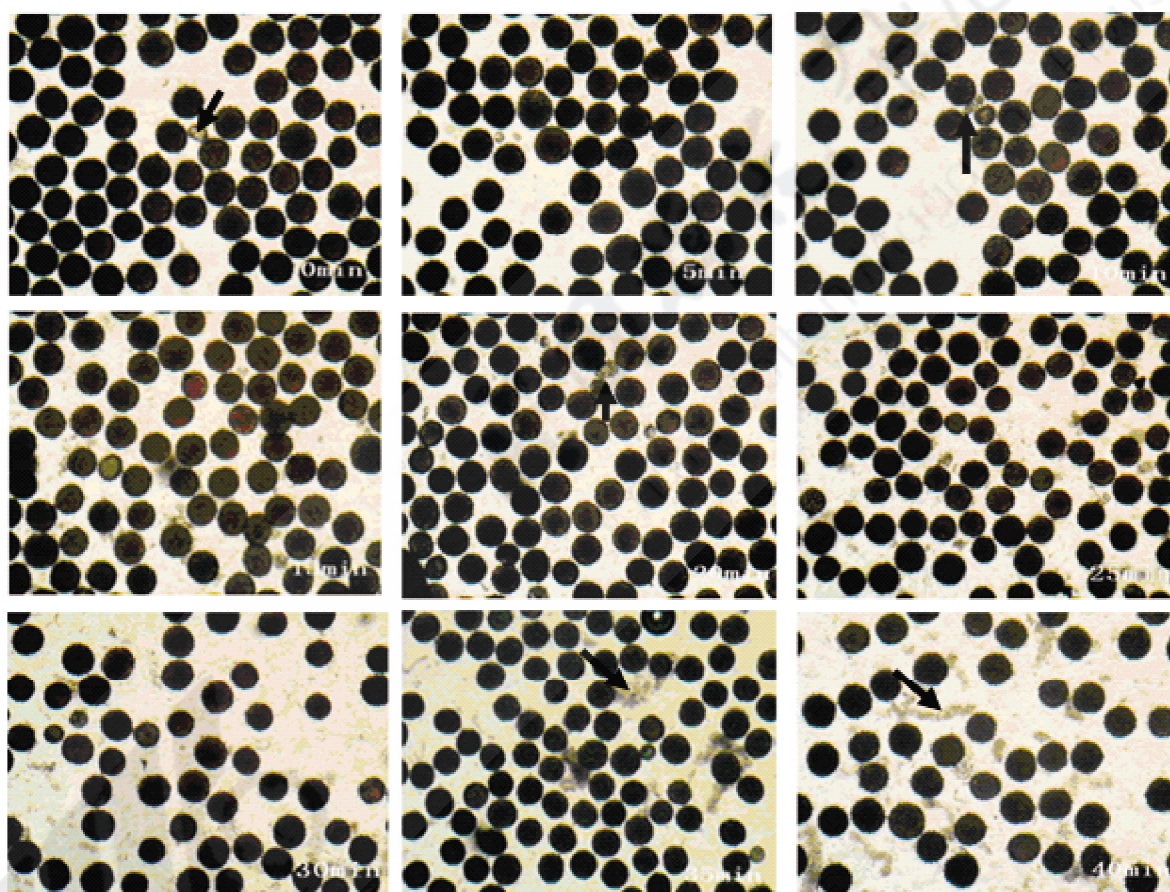


图 3 不同真空处理下花粉的破损(×200)

Fig. 3 Different vacuum time to treated the exploded pollen rate (×200)

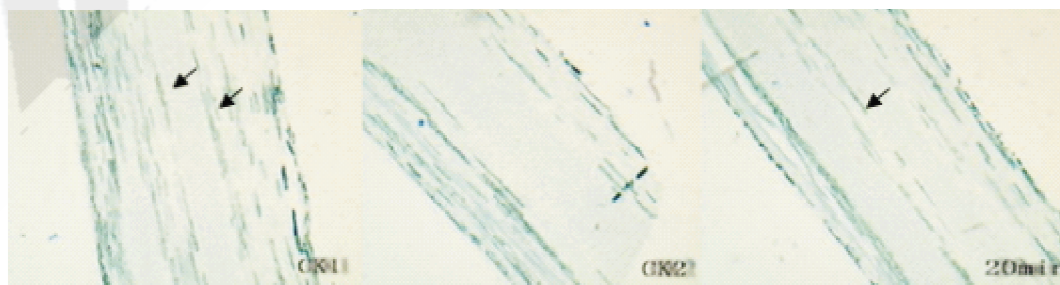


图 5 花粉管在花柱中的伸长(×100)

Fig. 5 The germinating pollen tubes in the style tissue (×100)