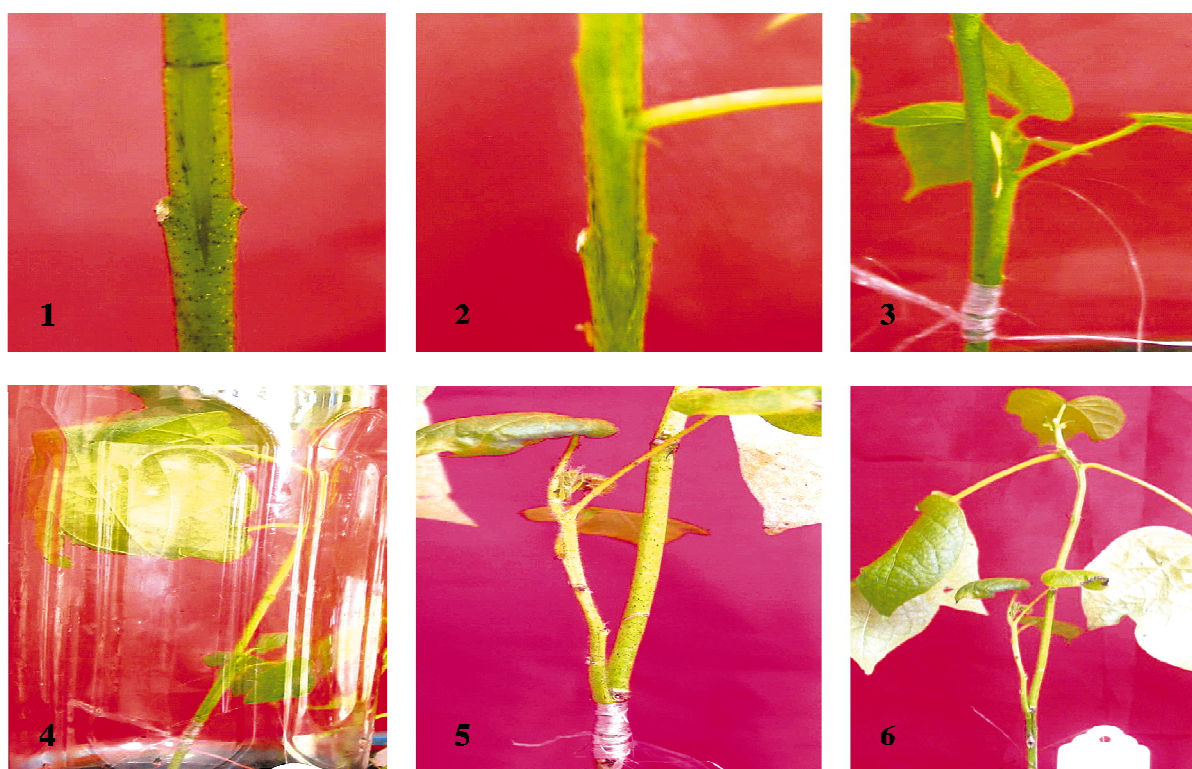


1 切削砧木 Cut and pare the stock; 2 再生植株 Regeneration plant; 3 削接穗 Pare the cion; 4 插接穗 Insert the cion; 5 密封保湿 Seal for humidity; 6 成活的接穗 Survival cion

图 1 插皮接

Fig. 1 Bark grafting



1 T形接口 Tee notch of stock; 2 插接穗 Insert the cion; 3 绑扎 Bind the notch of grafting; 4 密封保湿 Seal for humidity; 5 揭瓶后的接穗 Cion after uncovering the bottle; 6 成活的接穗 Survival cion

图 2 T形切口的插皮接

Fig. 2 Tee notch bark grafting